



2025/2026 Graduate Student Handbook

Department of Environmental Engineering, National Cheng Kung University

Department of Environmental Engineering, National Cheng Kung University

【2025/2026 Graduate Student Handbook】

Table of Contents

I.	Admission Eligibility and Procedures	1
	(1) Admission Eligibility	1
	(2) Admission Procedures	2
II.	Advisor Selection	3
	(1) Research Field	3
	(2) Number of Doctoral and Master's Students Advised by Faculty in the Department	
III.	Course Regulation 6	
	(1) Course Selection Guidelines and Procedures	6
	(2) Credit Waiver	6
IV.	Graduate Student Graduation Credit Requirements and Expectations	8
	(1) Graduation Credits Regulation	8
	(2) Graduation Course Program	11
	(3) Graduate Student English Proficiency Assessment	12
	(4) Requirements for Doctoral Students' On-Campus Hours During Their Enrollment	13
	(5) Regulations on the Duration of Graduate Study	14

Department of Environmental Engineering, National Cheng Kung University

【2025/2026 Graduate Student Handbook】

V. Scholarships and Subsidies	15
(1) Master’s Program Scholarship	15
(2) Doctoral Program Scholarship	17
(3) External Scholarship Donations	19
(4) International Conference Subsidy Application	20
VI. Doctoral Qualification Exam	22
(1) Doctoral Qualification Exam	22
VII. Regulations for Doctoral Candidate Paper Publication	23
(1) Regulations for Doctoral Candidate Paper Publication.....	23
VIII. Doctoral Program Supervision	24
IX. Degree Examination 25	
(1) Master’s Degree Examination 25	
X. Other Departmental Regulations and Responsibilities 27	
(1) Faculty Members	27
(2) Administrative Staff and Duties	29
(3) Department Layout	30
(4) Department Building Entry and Exit Regulation 31	
(5) Graduation Procedure	33

Department of Environmental Engineering, National Cheng Kung University

【2025/2026 Graduate Student Handbook】

(6) Space Usage Regulations	34
(7) Management Rules and Process Flow for Accessing Precision Instrument Rooms and Public Laboratories	35
(8) Regulation Flowchart for Using the Precision Instrument Room	36
(9) Public Instrument Usage Regulations of Department	37
(10) Department Laboratory Safety and Health Regulations	38
(11) NCKU Computer and Network Center Service Overview	41
(12) NCKU Library Services	42

I. Admission Eligibility and Procedures

(1) Admission Eligibility

- a. For International Students: Applicants' eligibility is based on the "[Regulations Regarding International Students Undertaking Studies in Taiwan](#)" regulated by the Ministry of Education (MOE). If the regulations are updated, these will take priority over those announced by the MOE. For the most up-to-date information on the MOE Regulations, please get in touch with the MOE directly.
- b. For Overseas Chinese Students: Please confirm your status as an Overseas Chinese, Hong Kong, Macao, or other foreign Chinese student. For Master's and Doctoral degrees, please apply through the University Entrance Committee for Overseas Chinese Students.
 1. Those who were born overseas and have resided continuously since the date of application, or have recently resided overseas for more than 6 years. (Those applying for the School of Medicine, Dentistry, and Chinese Medicine must have accommodation for over eight consecutive years.)
 2. Students of Chinese descent who have obtained permanent or long-term residence permits in the place of residence.

*"overseas" refers to countries or regions other than Mainland China, Hong Kong, and Macau.

I. Admission Eligibility and Procedures

(2) Admission Procedures

- a. For International Students (Please refer to [NCKU OIA Website](#)):
 1. Confirm your eligibility to apply as an international student. Please refer to "Applicant's Eligibility".
 2. Refer to the "Current Programs" via the application portal to ensure the program(s) you intend to apply for are on offer for the current admission round. ([NCKU Course Program for International Students](#))
 3. Prepare the required documents and the application fee, according to "Required Documents" and Payment instructions for details.
 4. Check with the Current Programs (via the [Application Portal](#)) if the chosen departments/institutes require additional documents, interviews, and/or tests. (*Interview details and schedules will be notified by the department/institution if necessary.)
 5. Complete the application online via the application portal before the deadline.
- b. For Overseas Chinese Student:
 1. Please confirm your status is an Overseas Chinese, Hong Kong, Macao, or other foreign Chinese student.
 2. For Master's and Doctoral degrees, please apply through the [University Entrance Committee for Overseas Chinese Students](#).

References

1. Regulations Regarding International Students Undertaking Studies in Taiwan: <https://law.moj.gov.tw/ENG/LawClass/LawAll.aspx?pcode=H0110001>
2. University Entrance Committee for Overseas Chinese Students: <https://cmn-hant.overseas.ncnu.edu.tw/further-study-area/admissions-guide/>
3. NCKU OIA Website: <https://oia.ncku.edu.tw/p/404-1032-229816.php?Lang=en>
4. Application Portal for International Students: <https://management.oia.ncku.edu.tw/intladmission/index/index/applyIntladmissionSn/22>

I. Admission Eligibility and Procedures

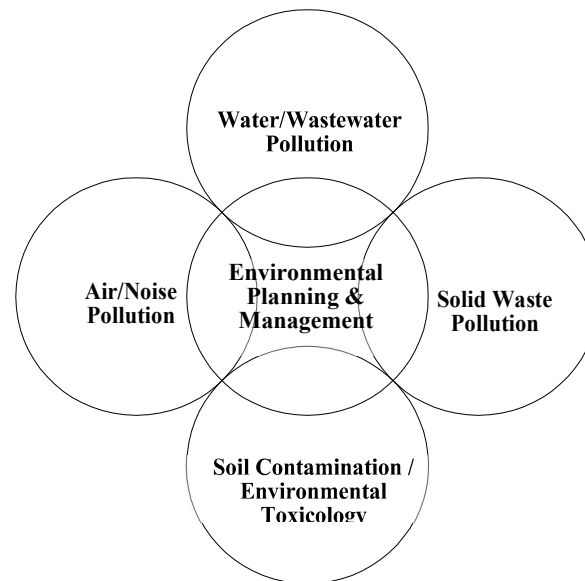
5. Contact: Assistant Chen, Telephone: (06)2757575 ext. 65804

II. Advisor Selection

(1) Research Area

The department's teaching and research are divided into five major areas: water/wastewater, air/noise, solid waste pollution, soil contamination and environmental toxicology, and environmental planning and management. Research personnel within each area specialize in their respective fields, coordinating research outcomes to achieve integrated development. All professors in this department are specialists in their own research fields and have a wealth of research achievements. As research directions and projects may vary from year to year, it is highly recommended that students meet with their potential advisors in person to gain a deeper understanding of their research interests and objectives.

After receiving their admission notification, students should contact and meet with potential advisors as soon as possible to familiarize themselves with the department's environment and future research directions. Please refer to the reference materials in this section for a brief introduction to our faculty and the courses they offer.



Environmental Research Problems and Integration

II. Advisor Selection

(2) Number of Doctoral and Master's Students Advised by Faculty in the Department

To ensure an equitable distribution of the research workforce across various academic fields, to foster balanced development in critical environmental issues, and to enable each professor to provide thorough guidance to their students, the following four resolutions on "**the number of graduate students advised by faculty members**" have been approved by the department meeting. The goal is to achieve balanced development through fairness and impartiality.

- 1) Each faculty member shall, in principle, advise a maximum of three new master's students (local) and one new Ph.D. student annually. Implementing this clause will be based on the annual survey of faculty members' willingness to advise students. A consent form will be issued to each faculty member advising new master's and Ph.D. students. After the advising professor and the student have signed the form, it must be submitted for the record within 30 days of the student's registration. Suppose a student has not confirmed an advising professor within 30 days of the registration date. In that case, the Academic Committee will discuss and decide the matter, or the department head will temporarily serve as the student's advisor.
- 2) According to the execution of the first provision, if any quota remains after allocation, priority shall be given to faculty members who supervise fewer than three graduate students in the current academic year. If there are remaining quotas, priority shall be given to faculty members whose number of supervised graduate students was insufficient in the previous academic year. If quotas remain thereafter, allocation shall be determined based on the accumulated supervision points of faculty members (two points per doctoral student and one point per master's student), with priority given to those with the lowest total points.

II. Advisor Selection

- 3) Each faculty member is limited to advising 2 to 10 graduate students (local students not to exceed 10).
- 4) If a faculty member wishes to exceed the specified number of Ph.D. or master's students in a given year, the department meeting shall discuss and decide the matter.

References

1. NCKU Department of Environmental Engineering Faculty List: <https://ev.ncku.edu.tw/p/412-1184-25532.php?Lang=en>
2. NCKU Course Enrollment and Information System: <https://course.ncku.edu.tw/index.php>

III. Course Regulation

(1) Course Selection Guidelines and Procedures

Course registration at the university is divided into two phases: "Initial Selection" and "Add/Drop/Withdrawal". The specific dates, eligible students, and procedures for each phase will be announced separately by the Office of Academic Affairs. Students should refer to the "**National Cheng Kung University Course Selection Guidelines**" and the "**Academic Affairs Office Course Selection Schedule Announcement**" for detailed information. All course registration is conducted online and is completed in three stages.

In addition to following university-wide regulations and announcements, master's and Ph.D. students in this department must have their course selections approved by their advisor after an advisor has been selected. They must then submit the "**National Cheng Kung University Department of Environmental Engineering Course Enrollment Form**" to the designated staff member to complete the registration process.

(2) Credit Waiver

Students from the following groups can apply for credit recognition and exemption: (a) Students who have transferred between departments or from another university. (b) New students who have retaken the entrance exam or reapplied for admission. (c) Students who were granted permission to take courses before being admitted into a degree program. (d) Undergraduate students who took graduate-level courses, provided those credits were not counted toward their bachelor's degree requirements, and the grades were at least 70, as specified in the graduate student regulations.

Graduate students in this department who meet the above criteria may apply for credit exemption in accordance with the "**NCKU Course Credit Waiver Regulations**."

III. Course Regulation References

1. NCKU Course Enrollment Regulations: <https://www.cc.ncku.edu.tw/rule/content.php?sn=114>
2. NCKU Course Credit Waiver Regulations: Regulations: https://reg-acad.ncku.edu.tw/var/file/41/1041/img/3064/a11_crd.pdf
3. The NCKU Department of Environmental Engineering course selection form can be directly accessed via the department website under "Document> Course Enrollment Form."
4. Contact: Ms. Huang, Telephone: (06)2757575 ext. 65806

IV. Graduate Student Graduation Credit Requirements and Expectations

(1) Graduate Students' Graduation Credits Requirements and Regulations

- a) Master's Program Graduation Credit Requirements: A total of 24 credits is required, which includes:
- A minimum of 24 credits must be earned from professional graduate-level elective courses.
 - At least two of four core courses in the department program must be taken: Mathematical, Physical, Chemical, and Biological Principles of Environmental Engineering.
 - Mandatory six credits of Thesis.
 - The course Seminar must be taken every semester and is required for at least two semesters.
 - The six credits for the Master's Thesis and the credits for the four semesters of Seminar are not included in the graduation credit total.
 - Students admitted from other universities (or departments) who have not previously taken the following courses must take them as remedial courses:
 - i. Fundamental courses: **(1) Applied Mechanics / Mechanics of Materials, (2) Fluid Mechanics 1, (3) Laboratory of Environmental Analysis, (4) Environmental Engineering Design**
 - ii. Core courses: **(1) Water Supply Engineering / Wastewater Engineering, (2) Air Pollution Control Engineering, (3) Solid Waste Engineering**
2. **For Local students:** Students who need to take remedial courses may count them towards their graduation credits, provided they meet the passing standard of 70 points:
- 7 remedial foundational courses: 9 elective credits
 - 6 remedial foundational courses: 6 elective credits
 - 5 remedial foundational courses: 3 elective credits
3. **For International students**
- You must take 4 of the seven foundational courses listed above. If English-taught classes are unavailable, you may take relevant graduate-level courses for credit (6 credits).

IV. Graduate Student Graduation Credit Requirements and Expectations

- You must also provide proof of completion of two terms of the free "Chinese Course for International Degree Students (CIDS)" offered by the College of Liberal Arts' Chinese Language Center. This requirement can be waived if you have an equivalent Chinese language proficiency certificate (for two terms) obtained before admission.

b) Doctoral Program Graduation Credit Requirements: A total of 24 credits is required, which includes:

1. A minimum of 24 credits must be earned from professional graduate-level elective courses.
 2. At least two of the four core courses in the department program must be taken: Mathematical, Physical, Chemical, and Biological Principles of Environmental Engineering.
 3. Mandatory 12 credits of Doctoral Thesis.
 4. The course Seminar must be taken every semester and is required for at least four semesters.
 5. The twelve credits for the Master's Thesis and credits for the four semesters of Seminar are not included in the graduation credit total.
 6. Students admitted from other universities (or departments) who have not previously taken the following courses must take them as remedial courses:
 - i. Fundamental courses: **(1) Applied Mechanics / Mechanics of Materials, (2) Fluid Mechanics 1, (3) Laboratory of Environmental Analysis, (4) Environmental Engineering Design**
 - ii. Core courses: **(1) Water Supply Engineering / Wastewater Engineering, (2) Air Pollution Control Engineering, (3) Solid Waste Engineering**
- **For Local students:** Students who need to take remedial courses may count them towards their graduation credits, provided they meet the passing standard of 70 points:
 - i. 7 remedial foundational courses: 9 elective credits
 - ii. 6 remedial foundational courses: 6 elective credits
 - iii. 5 remedial foundational courses: 3 elective credits
 - **For International students**

IV. Graduate Student Graduation Credit Requirements and Expectations

- You must take 4 of the seven foundational courses listed above. If English-taught classes are unavailable, you may take relevant graduate-level courses for credit (6 credits).
- You must also provide proof of completion of two terms of the free "Chinese Course for International Degree Students (CIDS)" offered by the College of Liberal Arts' Chinese Language Center. This requirement can be waived if you have an equivalent Chinese language proficiency certificate (for two terms) obtained before admission.

7. **Passed the Ph. D. qualification examination:** Please refer to **Section VI** of this handbook for details.

- c) Based on the resolutions passed at the 4th Curriculum Committee Meeting for the 112 academic year (May 29, 2024) and approved at the 429th Department Meeting (June 5, 2024), the following changes will be made to our course offerings due to departmental development needs: The mandatory courses, "Applied Mechanics" (3 credits) and "Mechanics of Materials" (3 credits), will no longer be offered starting from the 113 academic year. These two courses will be integrated into a new mandatory course, "Engineering Mechanics" (3 credits), provided in the second semester of the 113 academic year. Students who transferred to our graduate program from other universities or departments and have not previously taken these courses may fulfill the make-up credit requirement by taking an equivalent course—with the same course title and credit count—offered by a college within the College of Engineering, such as "Applied Mechanics" or "Mechanics of Materials," or by taking our undergraduate department's mandatory course, "Engineering Mechanics" (3 credits).

IV. Graduate Student Graduation Credit Requirements and Expectations

(2) Graduate-Level Courses

Fundamental	<p>< Core Courses ></p> <p>Mathematical Principles of Environmental Engineering 【3】</p> <p>Biological Principles of Environmental Engineering 【3】</p> <p>Physical Principles of Environmental Engineering 【3】</p> <p>Chemical Principles of Environmental Engineering 【3】</p> <p>< Common Environmental Courses ></p> <p>Introduction to Environmental Biotechnology 【3】 Trace Chemical Analysis 【3】</p> <p>Laboratory for Unit Operations of Environmental Engineering 【3】</p> <p>Experimental Design and Analysis 【3】 Environmental Toxicology 【3】</p> <p>Environmental Organic Chemistry 【3】</p>
Water	<p>Water Treatment Plant Design 【3】 Special Topics on Water Treatment Engineering 【3】</p> <p>Biology Reactor Design 【3】 Advanced Wastewater Treatment 【3】</p> <p>Microbial Ecology 【3】 Special Topics on Environmental Microbiology 【3】</p> <p>Water Quality Management 【3】</p>
Air	<p>Combustion Principles and Control 【3】 Modern Air Pollution Control Technologies 【3】</p> <p>Atmospheric Chemistry and Application 【3】 Aerosol Technology 【3】</p> <p>Climate Change and Air, Water Resource Management 【3】</p>
Solid Waste	<p>Cleaner Production 【3】 Green Energy Technology 【3】 Circulation of Resources 【3】</p> <p>Pollution Prevention and Sustainable Materials Engineering 【3】</p>
Planning & Management	<p>Water Treatment Technology 【3】 Environmental Impact Assessment 【3】</p> <p>Special Topics of Energy and Environment 【3】</p> <p>Environmental System Analysis 【2】</p> <p>Sustainability Evaluation of Technologies 【2】</p>

IV. Graduate Student Graduation Credit Requirements and Expectations

Soil & Toxicology	Contaminated Site Remediation 【3】 Soil Chemistry and Analysis 【3】 Special Topics on Environmental Microbiology 【3】
Application	Principles and Applications of Environmental Sampling 【3】 Environmental Nano technology 【3】 Technical Writing and Presentation 【3】 Introduction to Environmental Law 【2】 Water Pollution Control 【3】

(3) Graduate Student English Proficiency Assessment

a. Master's Program : Applicable to students admitted from the 2013 fall semester onwards.

All master's students must meet one of the following English proficiency requirements for graduation:

1. GEPT (General English Proficiency Test): A score at or above the High-Intermediate level.
2. TOEFL iBT: A score of 70 or higher.
3. IELTS (International English Language Testing System): A score of 5.5 or higher.
4. New TOEIC (Test of English for International Communication): A score of 700 or higher.
5. Those who failed to meet the above requirements must attend 「On-line English for Graduate Students」 (Approved in the 169th Academic Committee Meeting of the Department of Environmental Engineering (April 3, 2024) and the 428th Department Affairs Meeting (May 1, 2024)).

b. Doctoral Program : Applicable to students admitted from the 2013 fall semester onwards.

Before applying for the final dissertation defense, Ph.D. students must pass one of the following English proficiency tests with a score at or above the specified minimum:

- TOEFL iBT: a score of 71 or higher.
- IELTS (International English Language Testing System): a score of 5.5 or higher.
- TOEIC (Test of English for International Communication, new format): a score of 750 or higher.
- Other equivalent English proficiency tests with a comparable score.

IV. Graduate Student Graduation Credit Requirements and Expectations

Alternatively, a Ph.D. student scores 590 or higher on the new TOEIC or a comparable score on another English proficiency test. In that case, they may fulfill the requirement by completing two relevant English-taught courses at an overseas university or college. These courses must be taken for at least one semester, with a minimum grade of "C" (or its equivalent). Please note that any Ph.D. student choosing to fulfill the requirement by taking courses abroad must first apply to the department and obtain approval from the Curriculum Committee.

(4) On-Campus Hour Requirements for Ph.D. Students

In response to the request from the Education Committee of the Environmental Engineering Society of the Republic of China—which aims to provide in-service advanced study opportunities for lecturers from junior colleges at domestic environmental engineering graduate institutes offering Ph.D. programs—our department meeting has resolved that Ph.D. students admitted from the 1994 academic year (AY 83) who wish to pursue their degree under the in-service study provision must satisfy the following two conditions:

1. A written consent letter from the student's original employer and their academic advisor.
2. The student must remain on campus at least three days per week during the first three years of their Ph.D. program. Suppose research needs require an adjustment to the number of on-campus days. In that case, a formal proposal must be submitted for approval by the advisor, and the Academic Committee must ratify the change. (Revised and passed at the 306th Department Meeting on February 18, 2012.)

(5) Regulations on the Maximum Duration of Study for Graduate Students

The maximum duration of study is defined as follows:

- **Master's Program:** The study duration is limited to **a minimum of one year and a maximum of four years.**
- **Ph.D. Program:** The study duration ranges from **a minimum of two years to a maximum of seven years.**
- **Students pursuing a Ph.D. directly** (without a master's degree): The study duration is limited to **a minimum of three years and a maximum of seven years.**
- In-Service Students who fail to complete the required coursework or the degree thesis within the stipulated duration may be granted a maximum extension of one additional year. The "in-service student" status is determined based on the

IV. Graduate Student Graduation Credit Requirements and Expectations

applicant's status at the time of admission.

References

1. NCKU Graduate Student Policies and Rules: <https://www.cc.ncku.edu.tw/rule/content.php?sn=118>
2. The graduate student's study duration requirements are based on Article 9 of the "**Graduate Student Policies and Rules,**" Chapter 4, Study Duration.
3. The department's graduation credit requirements follow Article 10 of the "**Graduate Student Policies and Rules,**" Chapter 4, Credits.
4. The postgraduate admissions guide outlines the doctoral program's on-campus hour requirements during study.
5. Contact: Ms. Huang, Telephone: (06)2757575 ext. 65806

V. Scholarships, Grants and Subsidies for Attending International Conference

(1) Master's Program Scholarship Application

The graduate student scholarships of this Department are classified into four categories: On-campus scholarships, Research assistant scholarships under faculty projects, Scholarships entrusted to the Department for selection by external organizations, and External scholarships. The current scholarships, application periods, and related information are shown in the following table:

Category	On-campus Scholarships		Research Assistant Scholarships	Scholarships Entrusted to the Department by External Organizations	External Scholarships
Name	Scholarship	Assistantship	Assistantship	Sinotech Engineering Consultants, Ltd. Scholarship	
Quota	According to university regulations	According to university regulations	In accordance with the supervising professor's research project requirements	2 master's students	
Amount	Master's Students: NT\$10,000/month	At least NT\$3,000/month	In accordance with the supervising professor's research project requirements	Master's students: NT\$30,000/year	
Application Period	First week of each semester	First week of each semester	In accordance with the supervising professor's research project requirements	First week of the fall semester	
Consultation	Ms. Huang, Administrative Staff	Ms. Huang, Administrative Staff	Respective supervising professors	Ms. Huang, Administrative Staff	Office of Student Affairs, Student Development & Activities Division
Obligations	Assist in departmental affairs.	Assist in departmental affairs; serve as teaching or administrative assistants	Assist in project implementation	Not specified	depends on scholarship regulations
Further Information	(1), (2)	(1), (2)		(3), (4)	(5)

V. Scholarships, Grants and Subsidies for Attending International Conference

- (1) [NCKU Regulations for Graduate Students' Scholarships and Assistantships](#)
- (2) [National Cheng Kung University Department of Environmental Engineering Regulations for the Implementation of Graduate Student Scholarships and Assistantships.](#)
- (3) Announcement for the Selection of the SINOTECH Scholarship for outstanding students in the Department of Environmental Engineering
- (4) Sinotech Scholarship for Undergraduate and Graduate Students <https://www.sinotech.org.tw/SocialParticipation/Scholarships?lang=en>
- (5) Office of Student Affairs, Student Assistance Division, Scholarship Service Website: <https://assistance-osa.ncku.edu.tw/index.php?Lang=en> Scholarship
- (6) For more information about scholarships for international students, please refer to [the National Cheng Kung University Implementation Guidelines for International Student Scholarships.](#)

V. Scholarships, Grants and Subsidies for Attending International Conference

(2) Doctoral Program Scholarship Application

The scholarships and stipends for Ph.D. students in this department are divided into four categories: On-Campus Scholarships/Grants, Project Assistant Stipends, Off-Campus Institutional Scholarships Commissioned to the Department for Selection, and External Scholarships. The current scholarship/stipend names, application periods, and related information are listed in the table below:

	On-Campus Scholarships	Project Assistant Stipends	Off-Campus Institutional Scholarships Commissioned to the Department for Selection	External Scholarships	
Name	Environmental Engineering Graduate Scholarships	National Cheng Kung University Directions of NSTC Doctoral Research Scholarship Pilot Program	Project Assistant Stipends	Sinotech Scholarship	Office of Student Affairs, Student Assistant Division Scholarship
Number of Recipients	Determined by the number of first-year students enrolled in the current year (Cannot be concurrently claimed with other on-campus or off-campus scholarships).	<ol style="list-style-type: none"> National Science and Technology Council (NSTC) Selection Category: Ph.D. freshmen enrolling in February or September of the year following the NSTC solicitation announcement. National Science and Technology Council (NSTC) Allocation Category: Ph.D. first-year students enrolling in February or September of the year the NSTC quota is allocated to the university. 	Varies based on the requirements of the supervising professor's research project.	Subject to announcement in the official letter.	Students apply directly online.
Application Period	Coordinated by the department office		Varies based on the requirements of the supervising professor's research project.	Handled according to the official letter (Approximately August to September annually).	Subject to the schedule announced by the Student Assistance Division.
Amount	Doctoral Student 20,000 NTD / Month (Total of 4years) [Approved in the 434th Department Affairs Meeting]	Ph. D. Student 40,000 NTD / Month (Total of 3 years)	Varies based on the requirements of the supervising professor's research project.	Ph. D. Student 30,000 NTD / Month	Not specified

V. Scholarships, Grants and Subsidies for Attending International Conference

<p>Mechanism / Stipulation</p>	<p>Ph.D. students who meet any of the following conditions may not apply for this scholarship/stipend: (1) Those who hold a part-time job and receive a salary outside the school. (2) Those who hold a part-time job and receive a salary on campus, or who receive other on-campus scholarships and subsidies, where the total amount does not exceed NT\$50,000 per month. (3) Those who have not submitted the Thesis Advisor Confirmation Form.</p>	<p>Each Ph.D. student is awarded a monthly scholarship of NT\$40,000 for a period of three years, commencing from the first year of the Ph.D. program. If a student graduates within three years, the award continues until the month of graduation. The entire award amount is funded by the Ministry of Science and Technology (MOST). (This section also notes the original "MOST Scholarship for Cultivating Excellent Ph.D. Students" [Ph.D. student NT\$40,000/month (Total 4 years)] in case there are students initially receiving that grant.</p>	<p>Subject to the requirements of the supervising professor's research project.</p>	<p>Ph.D. students must apply (Competitive process).</p>	<p>Approved by the respective application unit.</p>
--------------------------------	---	--	---	---	---

V. Scholarships, Grants and Subsidies for Attending International Conference

(3) External Scholarship Donations (Handled Annually According to the Official Letter from Each Donor/Sponsoring Organization)

班 別	獎學金名稱	名額	名額小計	每名金額	金額小計	總 計	
大學部	大學部	谷文琦博士獎學金(限大三、四,清寒優先)	1	21	30,000	30,000	310,000
		康淳科技股份有限公司獎學金	1		20,000	20,000	
		環工系74級系友助學金(清寒&僑生優先)	2		20,000	40,000	
		龍玉獎學金(清寒優先)	3		20,000	60,000	
		朱慶民先生獎學金	1		20,000	20,000	
		葉陳鄭氏獎學金	1		20,000	20,000	
		環工系68級系友獎學金	1		10,000	10,000	
		環工系69級系友獎學金(清寒優先)	1		10,000	10,000	
		環工系72級系友獎學金	1		10,000	10,000	
		環工系73級系友獎學金	1		10,000	10,000	
		環工系77級系友獎學金	1		10,000	10,000	
		李孫聰先生獎學金	2		10,000	20,000	
		高肇藩教授紀念獎學金	1		10,000	10,000	
		溫家班獎學金	1		10,000	10,000	
		華門工程顧問股份有限公司獎學金(清寒優先)	3		10,000	30,000	
大學部及碩士生 (舊生)	系友會特殊表現獎學金(例:各領域服務、體育、 美育表現或其他,歡迎自薦或同學推薦)	3	3	15,000	45,000	45,000	
研究所	碩士班	環佑實業有限公司獎學金	1	13	10,000	10,000	255,000
		立境環境科技股份有限公司獎學金	2		10,000	20,000	
		濤宇工程顧問股份有限公司獎學金	2		10,000	20,000	
		美商傑明工程顧問股份有限公司獎學金	1		25,000	25,000	
		中欣工程行獎學金	3		20,000	60,000	
		康淳科技股份有限公司獎學金	1		30,000	30,000	
		元科科技股份有限公司獎學金	1		30,000	30,000	
		黎明興技術顧問股份有限公司獎學金(碩一、碩二各1)	2		30,000	60,000	
總 計			37			610,000	

V. Scholarships, Grants and Subsidies for Attending International Conference

References

1. NCKU Department of Environmental Engineering website: <https://ev.ncku.edu.tw/index.php>
2. For more information about scholarships for international students, please refer to [the National Cheng Kung University Implementation Guidelines for International Student Scholarships](#).
3. Contact: Assistant Lin, Telephone : (06)2757575 ext. 65803

(4) Subsidies for Graduate Students Attending International Conferences

The funding sources for graduate students in this department attending international conferences include four organizations: the Ministry of Education (via NCKU), the K.T. Li Foundation for Development of Science and Technology, the Foundation for the Advancement of Outstanding Scholarship, and the Yen Tjing Ling Industrial Development Foundation. The application periods and relevant information for each subsidy are shown in the table below:

	Department of Environmental Engineering	NCKU Office of International Affairs (OIA)	K.T. Li Foundation for Development of Science and Technology	Foundation for the Advancement of Outstanding Scholarship	Yen Tjing Ling Industrial Development Foundation
Eligibility	Ph.D. students currently enrolled in the department (Non-professional part-time students)	Currently enrolled Ph.D. or Master's students	Ph.D. students who have passed the qualifying exam and have at least one article accepted by an international journal.	Undergraduate students (3rd year and above)	Ph.D. students who have passed the qualifying exam and have had an article accepted for presentation at an international academic conference. Oral presenters are given priority.
Subsidized Items	Round-trip airfare, registration fee, and living expenses. (The amount is limited to the difference not covered by other subsidies received, with a maximum of NT\$10,000 for the Asia region and NT\$20,000 for the Americas, Australia, Europe, and Africa regions).	Round-trip airfare, registration fee, and living expenses.	Round-trip airfare, registration fee (Maximum of NT\$30,000).	Round-trip airfare, living expenses.	Round-trip airfare, living expenses.
Application	15 days before the	One month	4 weeks	3 months before the	45 days before the conference.

V. Scholarships, Grants and Subsidies for Attending International Conference

Time	departure date.	before the conference start date.	before the conference.	departure date.	
Reference	(1)	(2)	(3)	(4)	(5)

* **Note: For online conferences, only the registration fee will be subsidized.**

- (1) [NCKU Department of Environmental Engineering Subsidy Guidelines for Doctoral Students Attending International Academic Conferences](#)
- (2) [Regulations Governing National Cheng Kung University \(NCKU\) International Conference Grants for Full-Time Instructors, Research Fellows, and Students](#)
- (3) K.T. Li Foundation for Development of Science and Technology : <http://www.ktli.org.tw/>
- (4) Foundation for the Advancement of Outstanding Scholarship : <http://www.faos.org.tw/>
- (5) Yen Tjing Ling Industrial Development Foundation: Foundation: Foundation : <https://www.tl.ntu.edu.tw/p-5.html>

VI. Ph.D. Qualification Exam

(1) Ph.D. Qualification Exam

The Ph.D. qualification examination in this department is conducted in accordance with the ' NCKU Directions for the Administration of the Ph.D. Qualifying Examination.' On January 8, 1994, the department passed the "Regulations for the Ph.D. Degree Candidacy Qualifying Examination of the Institute of Environmental Engineering, National Cheng Kung University" during a departmental meeting. The main contents are as follows:

- a. a. Doctoral students of the department may apply for the qualifying examination in accordance with the regulations. Their academic advisor shall serve as the convener and form the Ph.D. Qualifying Examination Committee (hereinafter referred to as "the Committee") to oversee the examination process.
- b. The Committee shall consist of five to seven members. The convener shall recommend scholars and experts, both within and outside the university, who are relevant to the student's research field. These members must be approved by the departmental meeting and appointed by the department chair.
- c. **The qualifying examination may be held once each semester and must take place within one month after the beginning of the semester.**
- d. **In principle, doctoral students should complete the qualifying examination within two years of enrollment, and no later than three years.**
- e. The Committee shall select the subjects of the qualifying examination based on the student's research area. A total of three subjects shall be selected, and a score of 70 out of 100 in each subject is required to pass.
- f. Each subject shall have one Committee member assigned to write the exam questions, grade, and assess the results.
- g. **If the student fails one or more of the three subjects in the first attempt, they may retake the failed subjects up to two times. Failure to pass after the retakes will result in dismissal from the program.**
- h. Only those who pass the qualifying examination will be granted Ph.D. candidacy status.

VII. Ph.D. Candidacy Thesis Publication Requirements

(1) Regulations on Thesis Publications for Ph.D. Candidates

As resolved in the 331st departmental meeting on June 4, 2014, the thesis publication requirements for Ph.D. candidates in this department have been amended as follows:

- a.** The candidate must have published or had accepted for publication at least two journal papers listed in the Science Citation Index (SCI), which will serve as the representative publications.
- b.** The Ph.D. candidate must be the first author of the representative publications, and the total number of authors (including the candidate and advisor) must not exceed four. These SCI journal papers must list the affiliation as the Department of Environmental Engineering, National Cheng Kung University.
- c.** If any of the representative papers include more than four authors (including the candidate and the advisor), then the candidate must have at least three SCI journal papers as representative publications.
- d.** The journal articles must be part of the doctoral dissertation.

References

1. NCKU Directions for the Administration of the Ph.D. Qualifying Examination :
<https://www.cc.ncku.edu.tw/rule/content.php?sn=134>
2. Contact Person : Ms. Huang, Telephone : (06)2757575 ext. 65806

VIII. Supervision During Ph.D. Studies

- (1) Each year between March and May, Ph.D. students must give a public presentation to the department, reporting on their coursework, research progress, and thesis publication status. The advisor is required to invite at least three faculty members (including the advisor) to attend. Faculty may provide suggestions for the advisor's reference.
- (2) Within one month before the degree examination, Ph.D. candidates must hold a public English presentation of their doctoral dissertation within the department.

References

1. [National Cheng Kung University Department of Environmental Engineering Regulations on Study and Advising for Doctoral Students.](#)
2. Contact Person : Ms. Huang, Telephone : (06)2757575 ext. 65806

IX. Degree Examination

(1) Graduate Degree Examination

The Ph.D. degree examination in this department is conducted in accordance with the NCKU Rules and Regulations of Graduation Examination for Graduate Students and the department's own Doctoral Degree Examination Regulations, as outlined below:

- a. The Department of Environmental Engineering (hereafter referred to as "the Department") conducts Ph.D. degree examinations in accordance with the university's relevant regulations and these departmental regulations.
- b. A Ph.D. student who has passed the qualifying examination (see Section VI), completed at least 24 course credits, and met the publication requirements (see Section VII), and who has completed a draft of their dissertation with the advisor's approval, may apply for candidacy review and the degree examination. The following documents must be submitted:
 1. **Application form for the degree examination.**
 2. **Transcript of academic records.**
 3. **Dissertation draft and abstract.**
 4. **List of published and accepted papers.**
 5. Turnitin similarity report printed from the [NCKU Library's electronic resource system](#), signed by both the student and the advisor (student signs and dates the first page with student ID; advisor signs, dates, and indicates agreement on the same page)
- c. The Department's Academic Committee will review the student's eligibility, including required coursework, qualifying examination results, and duration of study. Upon approval, the committee will assign a Review Panel consisting of faculty members (Associate Professor or above) in the candidate's field to review:
 1. **The dissertation draft and abstract.**
 2. **Published papers.**
- d. The review results will be submitted to the Department Chair for final approval of the degree examination application. Once approved, the department will follow the procedures outlined by the Office of Academic Affairs. The application must be submitted **at least one month before** the examination. The application package includes: **the application form, a list of examination committee members, the exam schedule, and minutes from the review panel meeting.**

IX. Degree Examination

(Application website: <http://campus4.ncku.edu.tw/wwwmenu/program/mou/login.php>)

- e. Two weeks before the examination, the advisor must send the dissertation draft to the internal and external members of the examination committee. A public English oral presentation may also be held before the examination.
- f. The degree examination will be graded using a **dissertation evaluation form**, and the results will be decided via anonymous vote. A candidate must receive at least two-thirds approval from the attending committee members and an average score of 70 or above to pass. Only one attempt is allowed.
- g. The entire examination process must be documented, and relevant records and the dissertation grade must be submitted by the department to the Registrar's Office for final processing.
- h. These regulations were implemented after approval by the departmental meeting and ratification by the Office of Academic Affairs. Any amendments will follow the same procedure.

References

1. NCKU Rules and Regulations of Graduation Examination for Graduate Students:
<https://www.cc.ncku.edu.tw/rule/content.php?sn=115>
2. Contact Person : Ms. Huang, Telephone : (06)2757575 ext. 65806

X. Other Departmental Regulations and Responsibilities

(1) Faculty Members

Title	Name	Degree	Research Fields	Title	Name	Degree	Research Fields
Professor and Department Chair	Jer-Horng Wu	PhD in Environmental Engineering, National Cheng Kung University	Biological Wastewater Treatment, Bioremediation, Microbiomics	Associate Professor	Pi-Cheng Chen	Ph.D. in Institute of Environmental Engineering, National Taiwan University	Circular Economy, Environment and Resource Economic Modeling, Environmental Risk Assessment, Sustainable City
Professor	Jiun-Horng Tsai	Ph.D. in Civil Engineering (Environmental Division), National Taiwan University	Air Pollution Prevention, Dispersion, Monitoring, and Management	Assistant Professor	Jung-Chen Huang	PhD, The School of Environment and Natural Resources, Ohio State University	Ecological Engineering, Wetland Ecology, Constructed Wetlands, Solid Waste Management, Phytoremediation, Wetland Restoration, Stream Restoration, Urban Ecology
Distinguished Professor	Hsin Chu	Ph.D. in Civil Engineering, Northwestern University	Air Pollution, Catalytic Reaction, Combustion Control, Energy Engineering, Greenhouse Effect, Incineration, Resource Reuse	Assistant Professor	Sheng-Lun Lin	PhD in Environmental Engineering, National Cheng Kung University	Advanced combustion, Renewable fuel, Combustion aerosol, Biomass and waste thermal treatments, Air pollution control, SVOC analysis, Air quality modeling, Air pollution source apportionment
Chair Professor	Tsair-Fuh Lin	Ph.D. in Civil and Environmental Engineering, University of California, Berkeley	Adsorption Technology, Identification and Treatment of Algal Metabolites, Site Remediation	Professor Emeritus	Ching-Gung Wen	Ph.D. in Civil Engineering, National Cheng Kung University	Engineering statistics, water quality modeling analysis, and water pollution control planning
Professor	Yee-Lin Wu	Ph.D. in Environmental Engineering, Carnegie Mellon University	Aerosol, Air Pollution Control Technique, Air Quality Monitoring and Analysis, Atmospheric Chemistry	Professor Emeritus	Hsing-Hsuong Cheng	Ph.D. in Environmental Engineering, Georgia Institute of Technology	Research on drinking water and wastewater biological treatment, bioreactor design, advanced wastewater treatment, and the physical principles of environmental engineering
Distinguished Professor	Liang-Ming Whang	Ph.D. in Civil and Environmental Engineering from the University of Wisconsin-Madison	BioEnergy Production Mechanisms and Mathematical Model Simulation, Biological Nutrient Removal of Wastewater Treatment Processes	Professor Emeritus	Hsuan-Hsien Yeh	Ph.D. in Civil Engineering, University of Missouri	Research on advanced drinking water treatment processes, membrane processes for water treatment, and water treatment technologies for high-tech industries
Professor	Shou-Heng	PhD in Environmental Engineering, National	Clean Energy Technology, Environmental Electrochemistry,	Professor Emeritus	Sue-Jane	Ph.D. in Environmental	Environmental impact assessment, environmental management, energy

X. Other Departmental Regulations and Responsibilities

	Liu	Cheng Kung University	Environmental Nanocatalysis, Sustainable Resources Engineering		Lin	Engineering, Department of Civil Engineering, University of Oklahoma	and environmental policy analysis, and life cycle assessment
Associate Professor	Chih-Hua Chang	PhD in Environmental Engineering, National Cheng Kung University	Bio-Optical Properties of Inland and Coastal Waters, Nonpoint Source Pollution, Remote Sensing Techniques for Water Environment, Water Quality Management, Water Quality Modeling	Professor Emeritus	Juu-En Chang	Ph.D. in Civil Engineering, Tohoku University	Solid waste treatment, resource recovery, and environmental engineering
Associate Professor	Pei-Hsin Chou	Ph.D. in the Graduate School of Global Environmental Studies, Kyoto University	Bioassay Application, DNA Adduct Analysis, Toxicant Identification	Honorary Chair Professor	Hong-Paul Wang	Ph.D. in Chemical Engineering (Fuels), University of Utah	Supercritical fluids, molecular/nano environmental technologies, green energy, resource recovery engineering, and incineration/gasification/pyrolysis engineering
Professor	Wen-Che Hou	Ph.D. in Civil Engineering, Purdue University	Aquatic Chemistry, Emerging Contaminants, Nano-Bio Interactions, Nanotechnology for Environmental Sustainability				
Associate Professor	Wan-Ru Chen	Ph.D. in Civil and Environmental Engineering, Georgia Institute of Technology	Surface Reactions and Catalysis Involving Natural Minerals, Transformation and Fate of Emerging Environmental Contaminants (Organic Contaminants/Pharmaceuticals/Pesticides) in Water and Soil Systems				

X. Other Departmental Regulations and Responsibilities

(2) Administrative Staff and Job Responsibilities

There are currently six administrative staff members in the department. Their job responsibilities are allocated as follows:

Name	Responsibilities and Duties
Ms. Huang	<p>★Administrative Affairs (Teaching, Research, Academic Affairs)</p> <p>Course planning and revision; exam, admission, and graduation matters; faculty promotion, leave, and hiring processes; scholarships for graduate students; selection of outstanding instructors; affairs related to advisors, department brochures, and the graduate student handbook; student registration, course selection, department transfer, and leave applications.</p>
Technician Tang	<p>★Administrative Affairs (Space and Equipment Management)</p> <p>Building maintenance, management of teaching equipment, network/webpage management, access control system, computer lab management, and precision instruments management.</p>
Assistant Lin	<p>★ Administrative Affairs (Student Affairs)</p> <p>Management and maintenance of the department's bilingual website, departmental budget, and funds (including industry-academia projects, foundation funds, education foundation funds, and Higher Education SPROUT Project funds); alumni relations and activities; student affairs; student counseling and emergency assistance; support for departmental student association and student activities.</p>
Assistant Chen	<p>★ Administrative Affairs (Teaching, Research, Development, and International Affairs)</p> <p>Assisting with teaching and lab courses; management and certification of precision instruments; preparation of course and evaluation materials for engineering education accreditation; support for the research development and international affairs divisions; data collection and documentation for the university's Top University Project and follow-up tracking.</p>
Mr. Lin	<p>★ Administrative Affairs (Environmental Maintenance)</p> <p>Cleaning and maintenance of the department building and surrounding areas; collecting and distributing mail and packages; mowing lawns around the front and back buildings; spraying disinfectants; cleaning classrooms and rooftop areas; drainage maintenance; replacing and supplying teaching materials (chalk, erasers); opening and closing building doors and gates.</p>
Ms. Tsai	<p>Document receipt and archiving; management of leave records and personnel data for all staff; performance evaluations; coordination of department events, announcements, and records; arrangements for guest visits; inter-university communications; providing external services and consultations.</p>

X. Other Departmental Regulations and Responsibilities

(4) Department Building Access Control Regulations

Department of Environmental Engineering, National Cheng Kung University

Access Card Management Regulations

Approved at the 198th Department Meeting on September 18, 2002
Revised at the 299th Department Meeting on June 1, 2011

Article 1

To ensure the safety of faculty, staff, and students, and to protect instruments and property within the department, these access card management regulations are hereby established.

Article 2

Access control will be enforced during non-working and non-class hours. Entry into the department building is permitted only through designated entrances, which require access cards. Other controlled public areas also require card access.

Article 3

Regulations on Access Card Application, Use, and Management:

1. All full-time and part-time faculty and staff are issued one access card each. Full-time faculty may request a second access card for backup and are responsible for its safekeeping.
2. Full-time research assistants (including postdoctoral researchers) who have been officially hired by NCKU or the NCKU Research and Development Foundation—verified through employment documents or proof of contract renewal issued by their advisor—may apply for an access card.
 - For those participating in collaborative projects with other units, proof of shared project funding allocated to this department must be provided.
 - **If not meeting the above conditions, research assistants must submit an advisor-issued employment proof (specifying the contract period) and pay an NT\$500 deposit to apply for an access card. The deposit will be refunded upon return of the card at the end of employment.**
3. Undergraduate and graduate students may apply for an access card after completing registration by presenting their student ID. Upon graduation or leaving the university, the access card must be returned to complete the clearance procedure.

X. Other Departmental Regulations and Responsibilities

4. In exceptional cases, the Department Chair may issue an access card with a valid period not exceeding one month.

Article 4

Access permissions will be assigned based on the intended use of each space within the department building.

Article 5

Cardholders are strictly prohibited from duplicating or lending their access cards to others. Violators will have their access privileges revoked. In case of card loss, the cardholder must purchase a replacement and reapply for registration.

Article 6

Anyone found intentionally tampering with the access system to impair or turn off its control function will have their access rights revoked and will be subject to disciplinary action in accordance with university regulations.

Article 7

These regulations shall take effect upon approval by the departmental meeting. Amendments will follow the same approval process.

X. Other Departmental Regulations and Responsibilities

(5) Graduation Clearance Procedure

1. Students can check their graduation clearance status via any of the following three methods:

i. University-Level Clearance Inquiry (NCKU)

National Cheng Kung University / Enrolled Student / Online service / Graduate School Leaving System

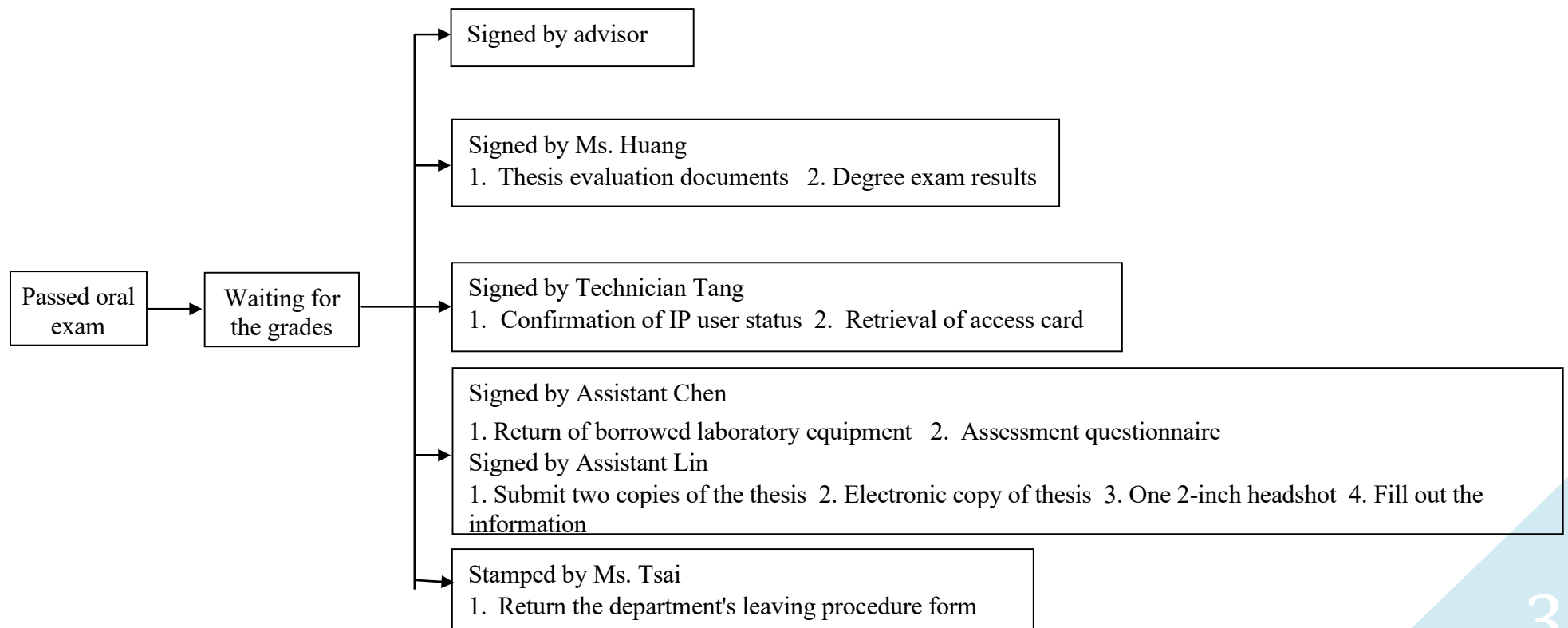
[Online Application System for Graduation from NCKU](#)

ii. Registrar Division Website / Students Online Service / Graduation Procedure

[Graduation Procedure \(ncku.edu.tw\)](http://ncku.edu.tw)

2. Department graduation procedure:

Department website / Document Download / Departure Leaving Procedure Form <https://ev.ncku.edu.tw/app/index.php>



X. Other Departmental Regulations and Responsibilities

(6) Space Usage Regulations

Ph.D. Student Research Room Usage Rules

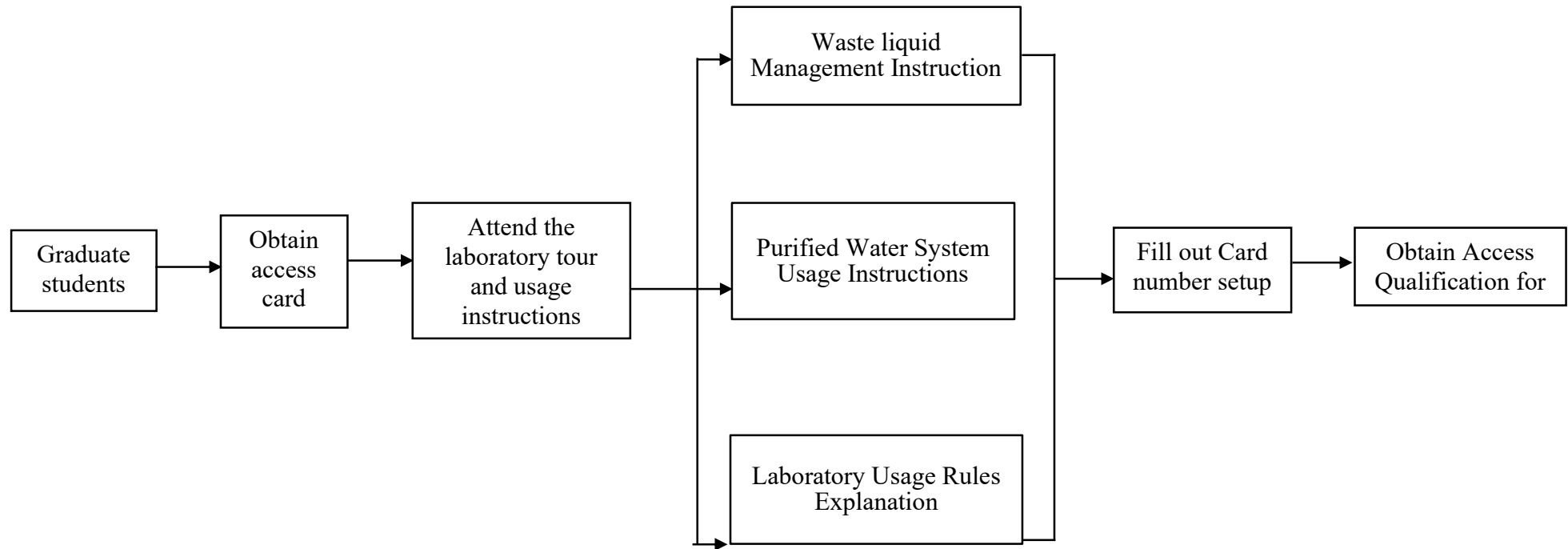
1. All Ph.D. students of the Department of Environmental Engineering with active enrollment status are eligible to apply for and register to use the research room.
2. Students who graduate or take a leave of absence must vacate their assigned seat before the end of the semester.
3. Each student is assigned one seat, selected by drawing lots.
4. Users must register and obtain a key from the administrative office. Key duplication and lending to others are strictly prohibited.
5. The last person to leave must turn off the air conditioning and lights and lock the door.
6. Maintain silence in the room. Mobile phones should be set to vibration mode.
7. Keep your workspace clean and conserve energy.
8. Do not bring laboratory chemicals into the Ph.D. research room.
9. Violation of the above rules twice will result in cancellation of usage privileges for the semester after discussion in the student meeting.
10. Any matters not covered in these rules shall be discussed and revised in the student meeting.

Master's Student Research Room Usage Rules

1. All Master's students of the Department of Environmental Engineering with active enrollment status are eligible to apply for and register to use the research room.
2. Each student is assigned one seat, selected by drawing lots.
3. Users must register and obtain a key from the administrative office. Key duplication and lending to others are strictly prohibited.
4. The last person to leave must turn off the air conditioning and lights and lock the door.
5. Maintain silence in the room. Mobile phones should be set to vibration mode.
6. Keep your workspace clean and conserve energy.
7. Do not bring laboratory chemicals into the Master's research room.
8. Violation of the above rules twice will result in cancellation of usage privileges for the semester after discussion in the student meeting.
9. Any matters not covered in these rules shall be discussed and revised in the student meeting.

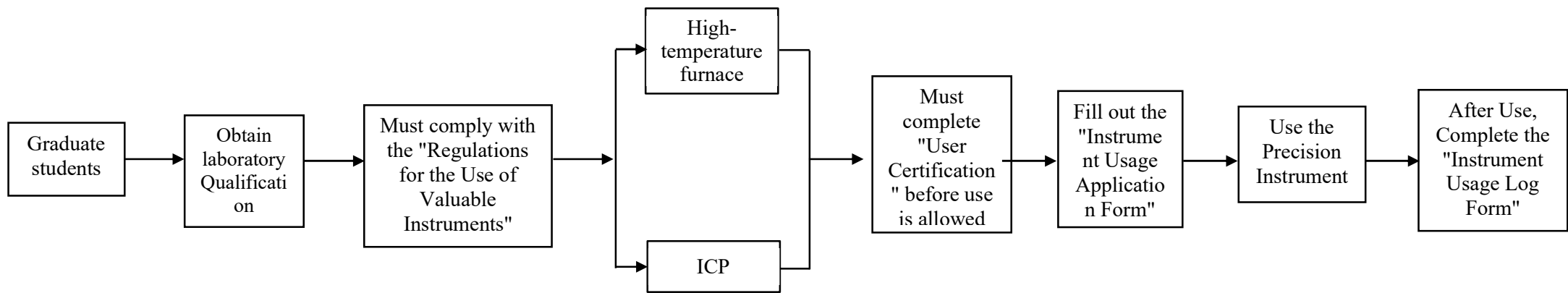
X. Other Departmental Regulations and Responsibilities

(7) Flowchart of Access Regulations and Procedures for the Precision Instrument Room and Common Laboratory



X. Other Departmental Regulations and Responsibilities

(8) Flowchart for Using the Precision Instrument Room



X. Other Departmental Regulation and Responsibilities

(9) Department Shared Instrument Use Regulations

The use of shared instruments in this department varies depending on the type of instrument; in principle, one must obtain permission in accordance with the “Department of Environmental Engineering Shared Instrument Use Regulations.”

To use an instrument, one must first thoroughly read the user manual. Only after receiving certification accompanied by the instrument's custodian may the instrument be used.

- a. Borrowing public instruments is not allowed during departmental teaching laboratory class times.
- b. The operator must make a reservation and registration with the assistant or instrument manager one day in advance, request the application form and key, and personally check whether additional gas must be ordered. If you are unable to experiment as scheduled, please cancel the reservation in advance.
- c. Students of this department who borrow instruments must first read the instrument's usage regulations. The instrument usage application form must be filled out accurately and signed by the advisor before use. After filling out the form, the upper half is submitted to the assistant before the operation, and the lower half is posted on the bulletin board outside the instrument room.
- d. Before the operation, the instrument must be carefully checked for normal working condition. If any abnormality is found, notify the manager; do not attempt unauthorized testing.
- e. During use, follow the correct operational procedures. If any abnormal condition arises, immediately stop using the instrument and notify the instrument manager.
- f. During use, one must fill out the logbook in detail — including user name, usage time, all conditions, etc. — with truthful entries. After use, return the key to the manager.
- g. Those who use instruments without applying or who violate the management rules will have usage privileges suspended for one month.
- h. Instrument certification is held on the second Tuesday of each month; those wishing to apply for certification must notify the assistant and instrument custodian one week in advance.
- i. During each summer and winter vacation, the department holds instrument training courses, inviting senior Ph.D.

X. Other Departmental Regulation and Responsibilities

students or instrument manufacturer engineers to explain instrument use. The number of classes depends on the number of students who register — please reserve early.

X. Other Departmental Regulations and Responsibilities

(10) Laboratory Safety & Health Regulations

a. Gas Cylinder

1. Cylinders must be clearly labeled with gas composition and properties.
2. Cylinders should be stored separately according to type: toxic gases, explosive gases, etc., must be stored apart from general gases, in cabinets with exhaust systems, with installed detectors.
3. Cylinders should be secured with chains to prevent them from falling due to vibration.
4. The usage date should be clearly marked on cylinders; empty cylinders should be noted as such.
5. Placement of cylinders should not obstruct normal passageways.

b. Instrument Installations

1. Switches should have protective covers; wire connections must not be exposed, and grounding must be ensured.
2. Wires should be securely fixed along the walls, not left scattered in the space, and should be kept away from water to prevent leakage.
3. Rotating shafts of motors should have protective covers.
4. Avoid using multi-outlet adapters to prevent fire hazards.
5. Heavy equipment like motors should not be stacked on shelves to prevent falling.
6. Instruments and devices should ideally be fixed in place to avoid falling during earthquakes.
7. Instrument piping connections should be clearly labeled to prevent misconnection and resulting danger.
8. In enclosed spaces, switches should be of the explosion-proof type.
9. Instruments with potential radiation should be placed in a separate room, with warning labels in Chinese at the entrance. Users must wear radiation badges and have them inspected on a regular basis. The room should also be periodically tested for radiation leakage.

c. Chemicals

1. Each reagent must be labeled with the usage date, property, and MSDS (Material Safety Data Sheet).

X. Other Departmental Regulations and Responsibilities

2. Reagents should be stored by category. Toxic, corrosive, or explosive reagents should be isolated in fume hoods or explosion-proof cabinets.
 3. Solvents should be stored separately near the floor in corner areas, in containers to prevent spillage due to broken bottles.
- d. Laboratory Management
1. No individual should perform dangerous experiments alone in the laboratory during weekends or late at night (after 10 p.m.).
 2. The lab should be well organized; items should be arranged neatly, and unused items should be regularly removed to avoid obstruction.
 3. MSDS sheets for commonly used hazardous substances should be posted in visible locations in the lab.
 4. Fire extinguishers should be placed in easily accessible locations in the lab, and their expiration dates should be monitored.
 5. Maintain good ventilation in the laboratory.
 6. Fume hoods should be regularly checked for airflow rate and volume to ensure ventilation efficacy.
 7. Laboratory chemicals should be neatly arranged, categorized, and clearly labeled.
 8. For example, in environmental chambers, ensure that the locking mechanism works correctly to avoid being locked inside.
 9. Overly confined spaces (e.g., environmental chambers) may accumulate biogas; switches in such spaces should be explosion-proof.
- e. Use of Gas Masks (Respirators)
1. Store in a sealed cabinet, away from external contact.
 2. Before use, the user must perform a simple fit test to confirm the mask seals correctly against the face.
 3. The mask's filter element must be replaced regularly.

Reference:

X. Other Departmental Regulations and Responsibilities

Instrument & Lab Safety Manager of the Department: Ms. Chen, Tel: (06) 2757575 ext. 65804

(11) NCKU Computer and Network Center Service Overview

The computer and network center provides various services according to regulations, as follows:

Network Services <u>Campus Wireless Network</u> <u>Student Dormitory Network</u> <u>SSL VPN Services</u> <u>IP Address Application</u> <u>Unit Network Management</u>	E-mail Services <u>NCKU Regulations for Email Use</u> <u>Personal E-mail (for Student and Staff) (Gmail)</u>	Teaching Support <u>NCKU E-learning Platform (Moodle)</u> <u>NCKU GE</u> <u>Online Conference Systems</u> <u>Computer Classrooms</u> <u>MyTube</u>
Host and Cloud Services <u>AI Editing</u> <u>Cloud Storage (MyBox)</u>	Academic Information Systems <u>Cheng Kung Portal (SSO)</u> <u>NCKU Announcement Platform</u> <u>「KUAP」</u>	

Contact: 【ext.: 61000】

References

1. NCKU Computer and Network Center : <http://www.cc.ncku.edu.tw/>

X. Other Departmental Regulations and Responsibilities

(12) NCKU Library Services <https://www.lib.ncku.edu.tw/service/service.php>



Access

- + Accessing the Library
- + Open Hours
- + Vacation Hours
- + Service for Reader of Various Status

Services

- +Borrowing | +Reservation |
- +Returning | +Renewal
- + In-House Usage
- + New Arrival Books
- + Course Reserve Services Search | Recommendation
- + Document Reproduction Service
- + Search for Missing Items
- + E-Resources Service
- + Closed Stacks
- + Use of the Special Binding Materials

Recommendation

- + Library Policies for Book Recommendations
- + Suggest a Purchase of Library Materials
- + Selected New Book Information for Recommendation
- + Library Donations Guidelines
- + Library Receipt Procedure for Newly Acquired Materials
- + Periodical Recommendation

Multimedia

- + Media Center Collection
- + Course Reserve for Media Materials
- + Online Audio Library
- + Online English Learning
- + Photography Copy Services
- + Borrowing A/V Materials for Club / Department Activities

Facilities

- + Study Carrel
- + Group Study Room
- + KnowLEDGE
- + Auditorium
- + Group Viewing Room
- + Bulletin for Auditorium
- + Conference Center
- + Conference Center Calendar
- + Art Gallery
- + Art Gallery Calendar
- + Training Room
- + Outdoor Spaces
- + Filming or Photography Applications

Open Access

- + OA APC Service
- + NCKU OA APC Service
- + ACS OA Free
- + Cambridge OA Free
- + IOP OA Free

Interlibrary Loan

- + Interlibrary Loan Service
- + Q & A
- + Nationwide Document Delivery Service (NDDS)
- + RapidILL, Service of Express Document Delivery
- + Interlibrary Borrowing Service

Promotions

- + Reference Consultation Service
- + Library Instruction
- + Library Tour
- + Library Activities
- + Library Information for New Faculty ppt | doc

Other

- + Register ORCID and Permit NCKU for further use
- + Google Scholar Citations Profile
- + LinkedIn-Professional Community Platform
- + RSS Information Service
- + Volunteer Workers
- + Library Card Member
- + Library Student Assistant Application Form
- + Patrons' Complaints Handling Procedure

